

Quick Guide for the V-Tap Analog



The V-Tap Analog is a device that can record the audio from an analog telephone line or any telephone that works with a handset. The captured data is stored onto an SD card and can optionally be sent to an external server (an Apresa recorder or the Call Recorder VoIP software running on the PC).

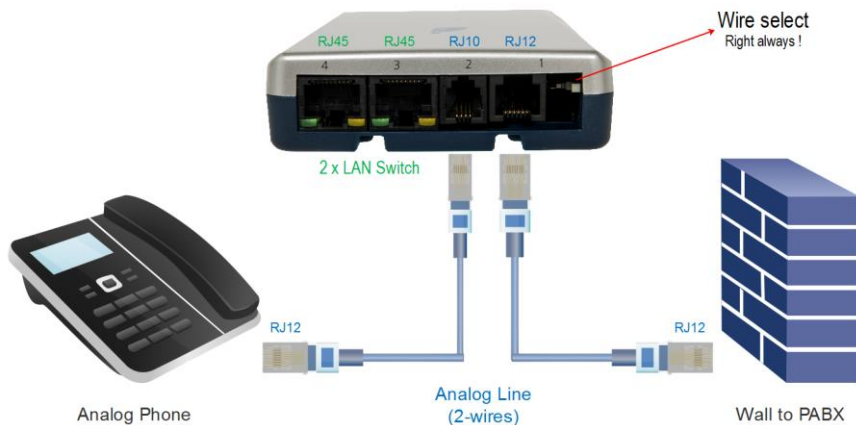
BOX CONTENT

- V-Tap Analog unit
- USB adapter
- USB cable
- Curled Telephone cable
- SD card
- CD with manual and Call Recorder VoIP software for the PC
- This Quick Guide

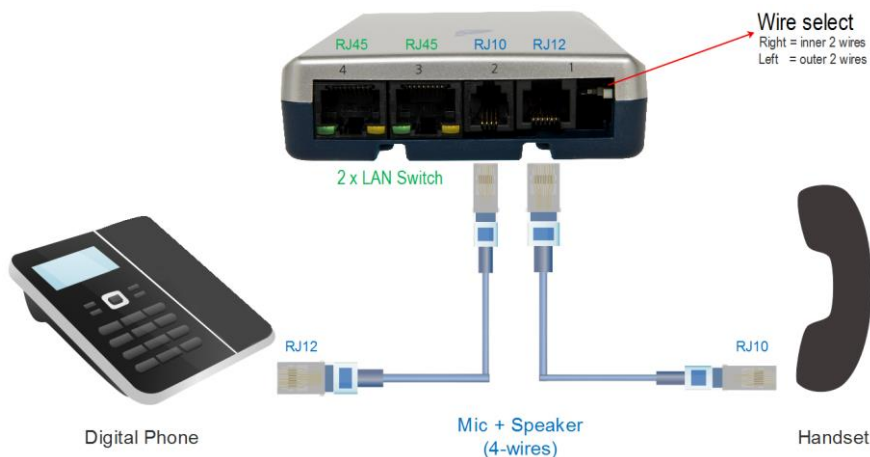
Quick Guide for the V-Tap Analog

HARDWARE INSTALLATION – 2 WAY'S TO CONNECT

1. On an analog line, in between the phone and the wall:



2. In between the handset and the phone:



NOTE1: An SD card must be inserted to store the recordings on.

NOTE2: USB must be connected for power supply.

NOTE3: Optionally connect the network to port 3 or 4 for web access and/or Tunnel function.

SETUP THROUGH THE WEB INTERFACE

By default, the V-Tap unit has DHCP enabled AND listens to the IP address 192.168.55.66. This IP address can be entered directly in the address bar of your browser, only when the local network does not have a DHCP server and when your PC has an IP address that lies in the same IP range as the IP address of the V-Tap Analog. The IP address of your PC must therefore lie in the range 192.168.55.0 till 192.168.55.255. The IP mask should be 255.255.255.0. Entering the IP address in your browser is showing the login page.

Default IP address:	192.168.55.66 (or from DHCP server)
Default User name:	admin
Default Password:	admin

After login, the settings page appears. For a detailed description of all the settings, see the V-Tap Analog manual.

Quick Guide for the V-Tap Analog

PC REQUIREMENTS FOR THE CALL RECORDER VOIP SOFTWARE

Windows Vista/7/8/10 , Intel Pentium >2GHz , 4GByte RAM , >100 MB free disk space.

SOFTWARE INSTALLATION

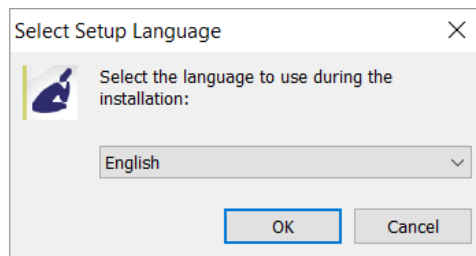
1. Connect the V-Tap Analog to a free USB port on your PC.

Note1: The V-Tap Analog must be connected to the same PC, otherwise the installer will not continue.

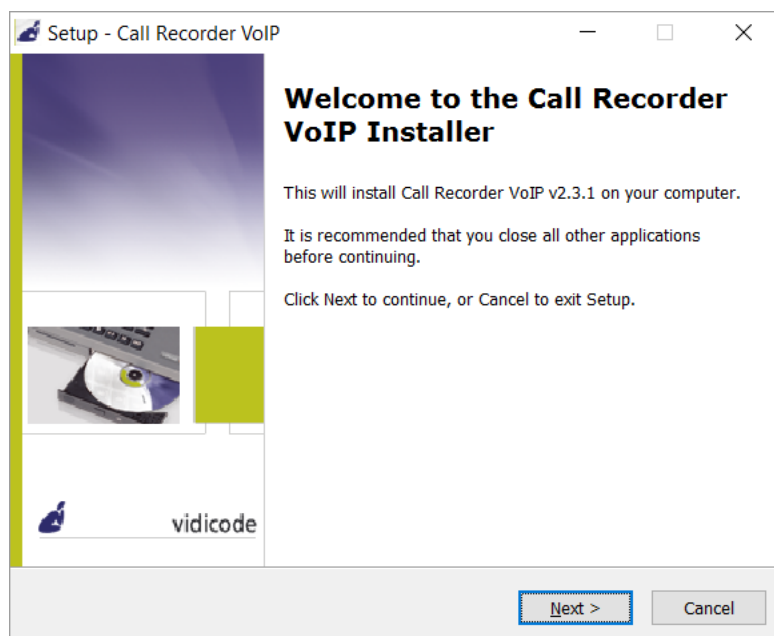
Note2: The V-Tap Analog may present itself in the Device Manager as a "Human Interface Device".

2. Software installation

Place the CD-ROM in your computer and the software installation starts automatically. In case the installation does not start automatically, locate the file 'CRVoIPInstall.exe' on the CD and start it manually. The following window appears:



- Select your preferred language for the installation and press OK



- Now you can proceed with the next steps of the installation and you will be asked to confirm the locations on your hard drive where to store the software and the data files.

NOTE: A separate installation of the **WinPcap** driver may be needed and is started automatically, depending on the absence of this low-level network interface driver.