

# Quick Guide for the V-Tap ISDN2



The V-Tap ISDN2 is a device that can record the audio from an ISDN line.

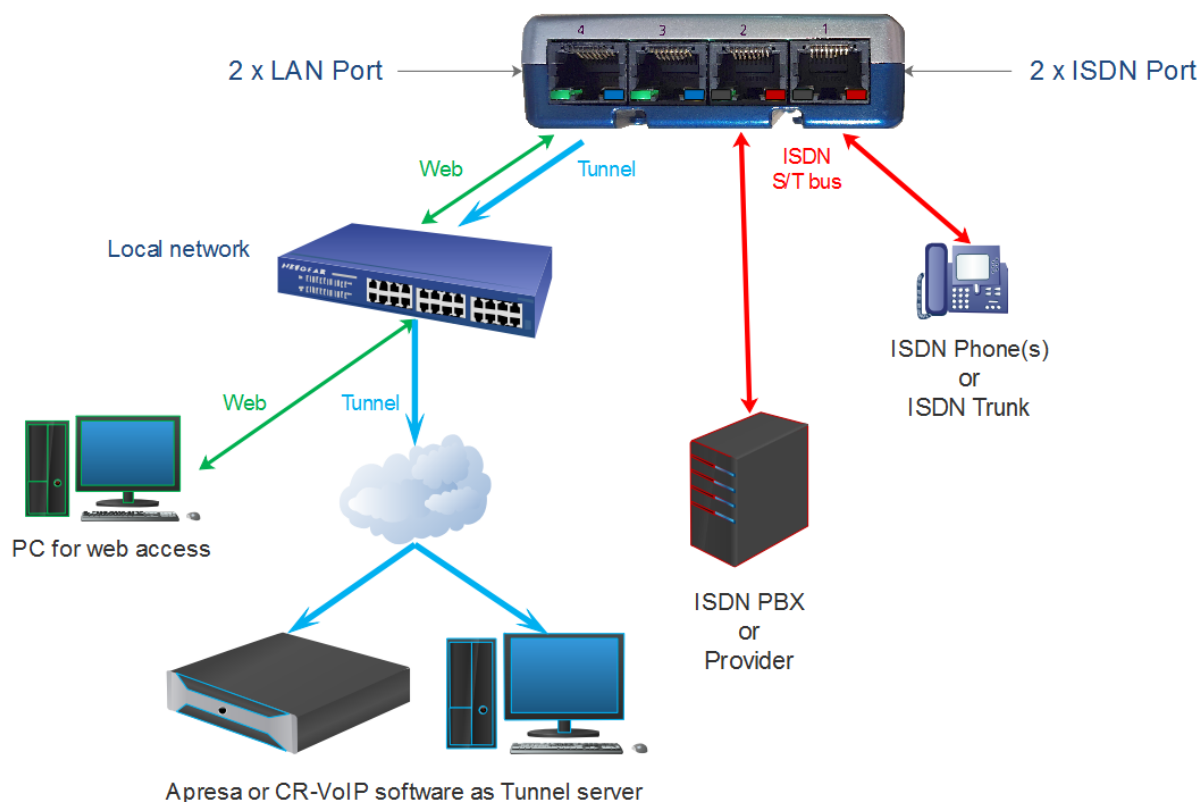
The captured data is stored onto an SD card and can optionally be sent to an external server (an Apresa recorder or the Call Recorder VoIP software on a PC).

## BOX CONTENT

- V-Tap ISDN2 unit
- USB adapter
- USB cable
- ISDN cable with two RJ45 connectors
- SD card
- CD with manual and Call Recorder VoIP software for the PC
- This Quick Guide

# Quick Guide for the V-Tap ISDN2

## HARDWARE INSTALLATION



- Connect the ISDN phone with the V-Tap to ISDN port 1.
- Connect the ISDN coming from the wall/PBX to ISDN port 2.
- Optionally connect the network to port 3 or 4 for web access and/or Tunnel function.
- Insert an SD card into the V-Tap to store the recordings on.
- Connect the USB of the V-Tap to the adapter for power supply.

## SETUP THROUGH THE WEB INTERFACE

By default, the V-Tap unit has DHCP enabled AND listens to the IP address 192.168.55.66. This IP address can be entered directly in the address bar of your browser, only when the local network does not have a DHCP server and when your PC has an IP address that lies in the same IP range as the IP address of the V-Tap ISDN2. The IP address of your PC must therefore lie in the range 192.168.55.0 till 192.168.55.255. The IP mask should be 255.255.255.0.

Entering the IP address in your browser is showing the login page.

Default IP address:	<b>192.168.55.66</b> (or from DHCP server)
Default User name:	<b>admin</b>
Default Password:	<b>admin</b>

After login, the settings page appears. For a detailed description of all the settings, see the V-Tap ISDN2 manual.

# Quick Guide for the V-Tap ISDN2

## PC REQUIREMENTS FOR THE CALL RECORDER VOIP SOFTWARE

Windows Vista/7/8/10 , Intel Pentium >2GHz , 4GByte RAM , >100 MB free disk space.

## SOFTWARE INSTALLATION

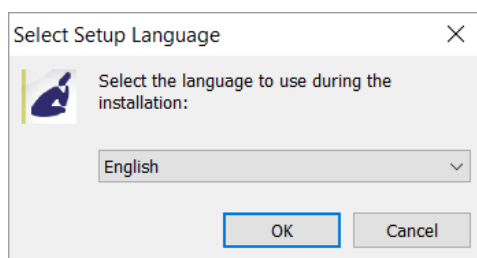
### 1. Connect the V-Tap ISDN2 to a free USB port on your PC.

Note1: The V-Tap ISDN2 must be connected to the same PC, otherwise the installer will not continue.

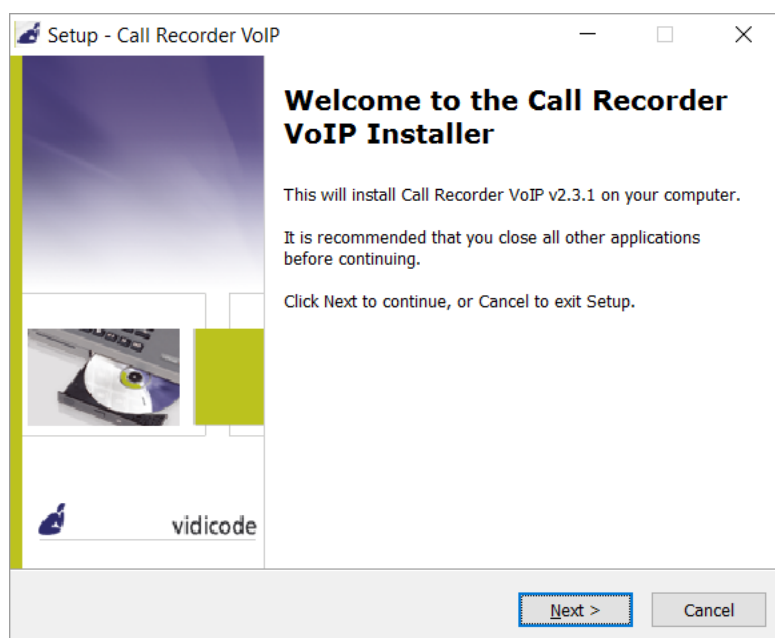
Note2: The V-Tap ISDN2 may present itself in the Device Manager as a "Human Interface Device".

### 2. Software installation

Place the CD-ROM in your computer and the software installation starts automatically. In case the installation does not start automatically, locate the file 'CRVoIPInstall.exe' on the CD and start it manually. The following window appears:



- Select your preferred language for the installation and press OK



- Now you can proceed with the next steps of the installation and you will be asked to confirm the locations on your hard drive where to store the software and the data files.

**NOTE:** A separate installation of the **WinPcap** driver may be needed and is started automatically, depending on the absence of this low-level network interface driver.